

DryPlus

SlimLine dryers: powerful, space-saving,
energy-efficient



PT 8203 WP

The new SlimLine heat-pump tumble dryers

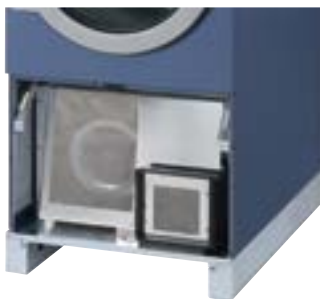


Benefits of SlimLine heat-pump dryers

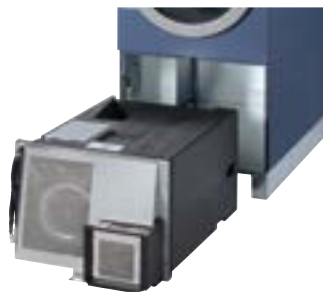
The rising cost of energy demands improved energy efficiency, particularly in the drying process. With the new PT 8203 WP SlimLine dryer, Miele Professional has added a particularly energy-efficient version to its existing range.

With a drum volume of 200 l, the PT 8203 WP is a perfect match for Miele Professional washer-extractors from the OctoPlus series with load capacities of 8 and 10 kg.

- 50% lower energy consumption compared with standard SlimLine dryers
- Specific energy consumption of only 0.26 kWh per kg of laundry
- No installation of vent ducting



The heat-pump module on the PT 8203 WP SlimLine tumble dryer is located below the drum. A two-stage filter system ensures the consistently high performance of the heat pump.



In the event of maintenance and servicing, the heat-pump module can simply be pulled out to the front. All components can be cleaned with incredible ease.



Complete encapsulation of the heat-pump module ensures optimum heat insulation and reduces sound emissions to an unbeatable 63dB(A). Self-monitoring cooling offers protection against overheating up to an ambient temperature of 43°C.

SlimLine tumble dryers: The Miele product portfolio



PT 8301 COP tumble dryer

- Tumble dryer with time controls
- Profitronic B COP controls for coin-op use, e.g. in launderettes
- Pay-by-time controls via connected payment system
- 4 temperature settings: Cold, low, medium high



PT 8301 tumble dryer

- Tumble dryer with time controls
- Profitronic B controls
- Time selection via rotary selector
- 5-minute increments from 5-60 mins.
- 4 temperature settings: Cold, low, medium high



PT 8203 WP and PT 8303 tumble dryers

- Tumble dryer with moisture sensing
- Profitronic B Plus controls
- Programme selection via rotary selector
- Selection of required drying stage and fabric type
- Modifiable programme parameters, e.g. reversing times, residual moisture

Tumble dryers	PT 8203 WP	PT 8301 COP	PT 8301	PT 8303
Drying system	Heat pump	Vented	Vented	Vented
Load capacity 1:25-1:20 [kg]	8-10	12-15	12-15	12-15
Drum volume [l]	200	300	300	300
Electrical connection (EL) 3N AC 380-415 V, 50 Hz	2.6 kW/3x16 A	14.2 kW/3x25 A	14.2 kW/3x25 A	14.2 kW/3x25 A
Heater rating	2.2 kW	13.5 kW	13.5 kW	13.5 kW
Heating type	WP	EL/G	EL/G	EL/G
External dimensions H/W/D [mm]	1800/711/1075	1800/711/1089	1800/711/1089	1800/711/1089

WP = Heat pump, EL = Electric, G = Gas



Benefits of SlimLine dryers

- Compact size (width only 711 mm) facilitates site access
- High-performance dryer on the smallest of footprints
- Open plinth allows use of palletiser (plinth fascia optional)



SlimLine dryer video on Miele YouTube channel

Miele Co Ltd.
Fairacres
Marcham Road
Abingdon
OX14 1TW
www.miele.co.uk/professional

Forever Better

Since 1899, Miele - a family run company - has subscribed to a clear corporate philosophy condensed into the two words 'Forever better'. This far-reaching claim is the bedrock of Miele's quality and sustainability and the power of innovation of a brand 'Made in Germany'. A brand promise which gives commercial users the certainty of having chosen the right product.

Award-winning

Uncompromising product reliability and service dependability is the reason why customers have repeatedly voted Miele the best and most trustworthy brand. Coveted awards such as the MX Award, the iF and reddot Design Awards and the German Sustainability Prize confirm the outstanding position Miele commands with respect to design, quality management and the conservation of valuable resources.

Proficient

Miele Professional has been developing and manufacturing a broad range of high-quality laundry machines, dishwashers, washer-disinfectors and sterilisers for decades. Carefully selected accessories, comprehensive advisory services and a fast-acting Miele service department ensures that machines perform to satisfaction and offer the ultimate in performance and efficiency.